



WILDTRAK
LEISURE AUSTRALIA

Multi-function Car Jump Starter

USER MANUAL

Model: S1000



What's in the box

- Wildtrak S1000 Jump Starter
- 1x Battery clamps with starter cable
- 1x High quality USB multi charging cable
- 1x AC Wall charger
- 1x User-friendly manual
- 1x Storage zipper case

Specifications

Model number	S1000
Capacity	12800mAh
EC5 output	12V/1000A maximum starting power (max.)
USB output	5V/2A
Type-C input	5V/2A
Charging time	3.5-6 hours
LED light power	White: 1W
Working temperature	-20°C ~+60°C / -4°F ~+140°F
Dimension (LxWxH)	154.6 x 39 x 81.3 mm

Product diagrams



① Power button

② LED display

③ EC5 Jump starter output

④ Type-C output

⑤ LED display light

⑥ USB 5V/2A output

Accessories

- 1x Battery clamps with starter cable
- 1x High quality type-C USB multi charging cable
- 1x AC Wall charger



Charge the Jump Starter battery

Charging with an AC adapter

1. Connect the battery input with Type-C cable.
2. Connect the Type-C cable to AC adapter.
3. Plug the AC adapter into a power source.

- Charge by 240V AC Adaptor



USB Multi Charging Cable



LED Display

Press the power button, the LED display shows as follows:



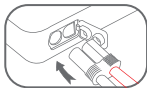
Show available battery

How to Jump Start Your Vehicle

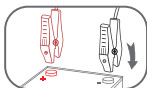


This unit is designed for jump starting 12V car batteries only and rated for gasoline engines up to 5 litres and diesel engines up to 3 litres. Do not attempt to jump start vehicles with a higher battery rating, or different voltage. If the vehicle isn't started immediately, please wait for 1 minute to allow the device to cool down. Do not try to restart the vehicle after three consecutive attempts as this may damage the unit. Check your vehicle for other possible reasons why it can't be restarted.

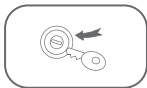
Operating instructions



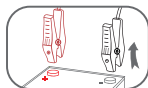
First step:
Plug the jumper cable clamp into the battery pack.



Second step:
Connecting the jumper clamps to the car battery. (Red is positive and Black is negative).



Third step:
Start the car by turning on the ignition key.



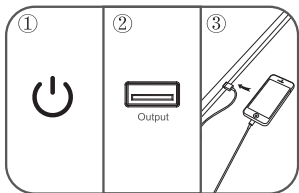
Fourth step:
After the car has been started, remove the red and black clamps from the car battery and then remove the plug from the battery pack.

How to charge a mobile phone or digital products?



With powerful capacity and USB Quick Charger(5V/2A) ,it can full charge your smart phones and tablets up to 75% faster than a standard charger.

Operating instructions

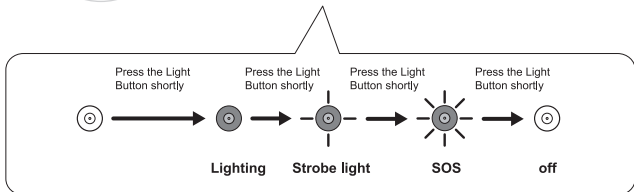


Press the power button-->connect the phone and power bank output port-->charging

LED flashlight



Short press the Light Button to turn on the flashlight. The battery capacity indicator lights up. Short press the light button again to scroll through the lighting, Strobe, SOS. Short press again to turn off the flashlight. The flashlight offers more than 35 hours of continuous use when fully charged.



Safety Warning

1. Do not connect the red and black clamps, this will cause the unit to short circuit.
2. Do not disassemble the unit.
3. Stop using immediately if the item is leaking or has an odor.
4. Do not use in extreme temperatures, high humidity, or in/around water.
5. Wait 1 minute between attempting two starts.
6. Do not use if the battery power is under 10%, it is recommended not to use the unit under 50%
7. Charge for at least 3 hours and ensure the battery is full charged before first use, and every 3 months after.

Warranty Exemption

1. The 12 months manufacturer's warranty will be void if:
The unit has been incorrectly used or operated outside of the safety warning guidelines.
2. The unit has been repaired, disassembled or modified by persons not authorized to do so by the manufacturer.
3. The unit has been charged using a non-compliant charger.